

137 Meliboea & TYC 0112-01970-1

2025 dec 13 10^h52.7^m U.T.

Planet: $a = 3.11, e = 0.22$
 V. mag. = 13.14 Diam. = 150.0 km = 0.08"
 $\mu = 30.75''/h$ $\pi = 3.50''$ Ref. = EG2023

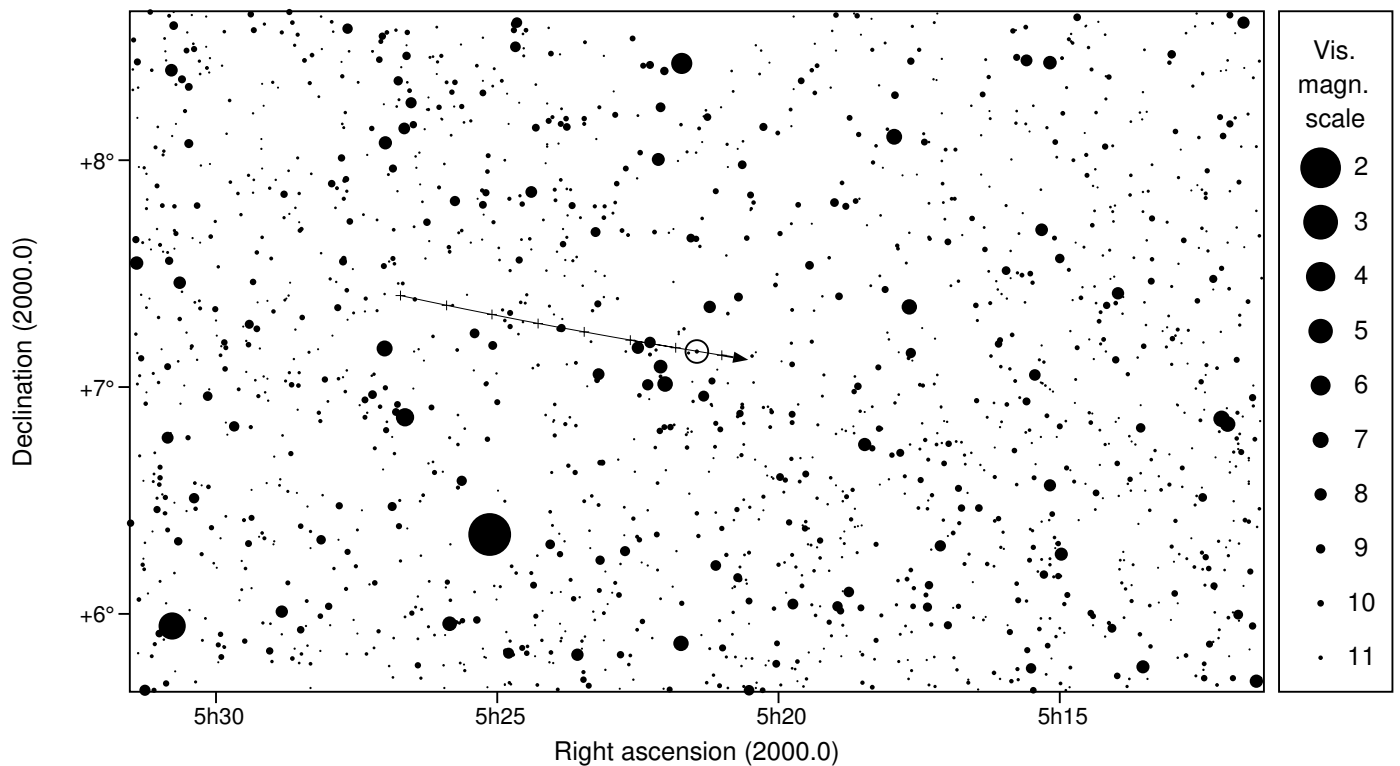
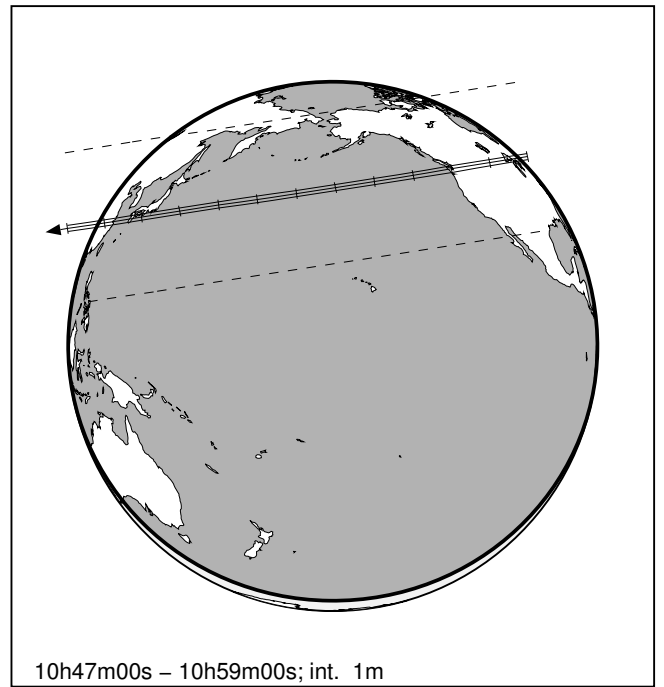
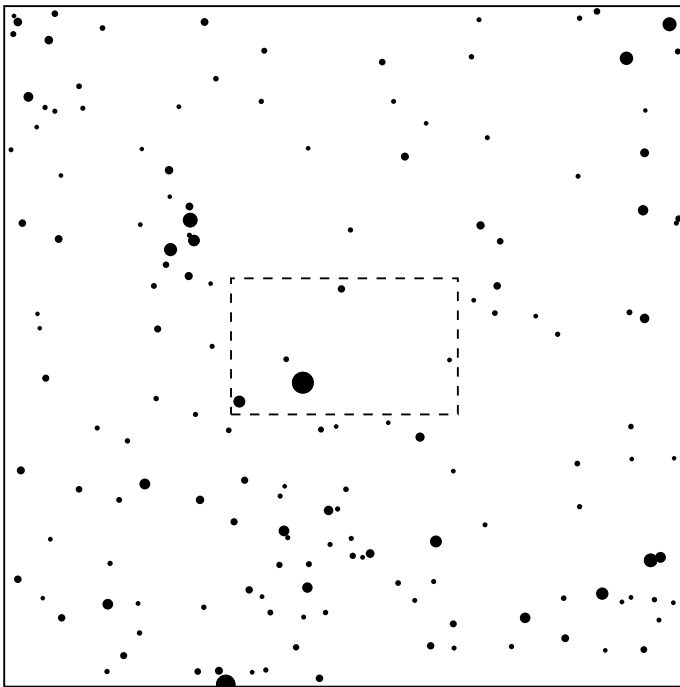
Star: Source cat. DR3
 $\alpha = 5^h 21^m 27.266^s$ $\delta = +07^\circ 09' 26.70''$
 Vmag = 11.19 Bmag = 11.93

$\Delta m = 2.1$

Max. dur. = 9.6s

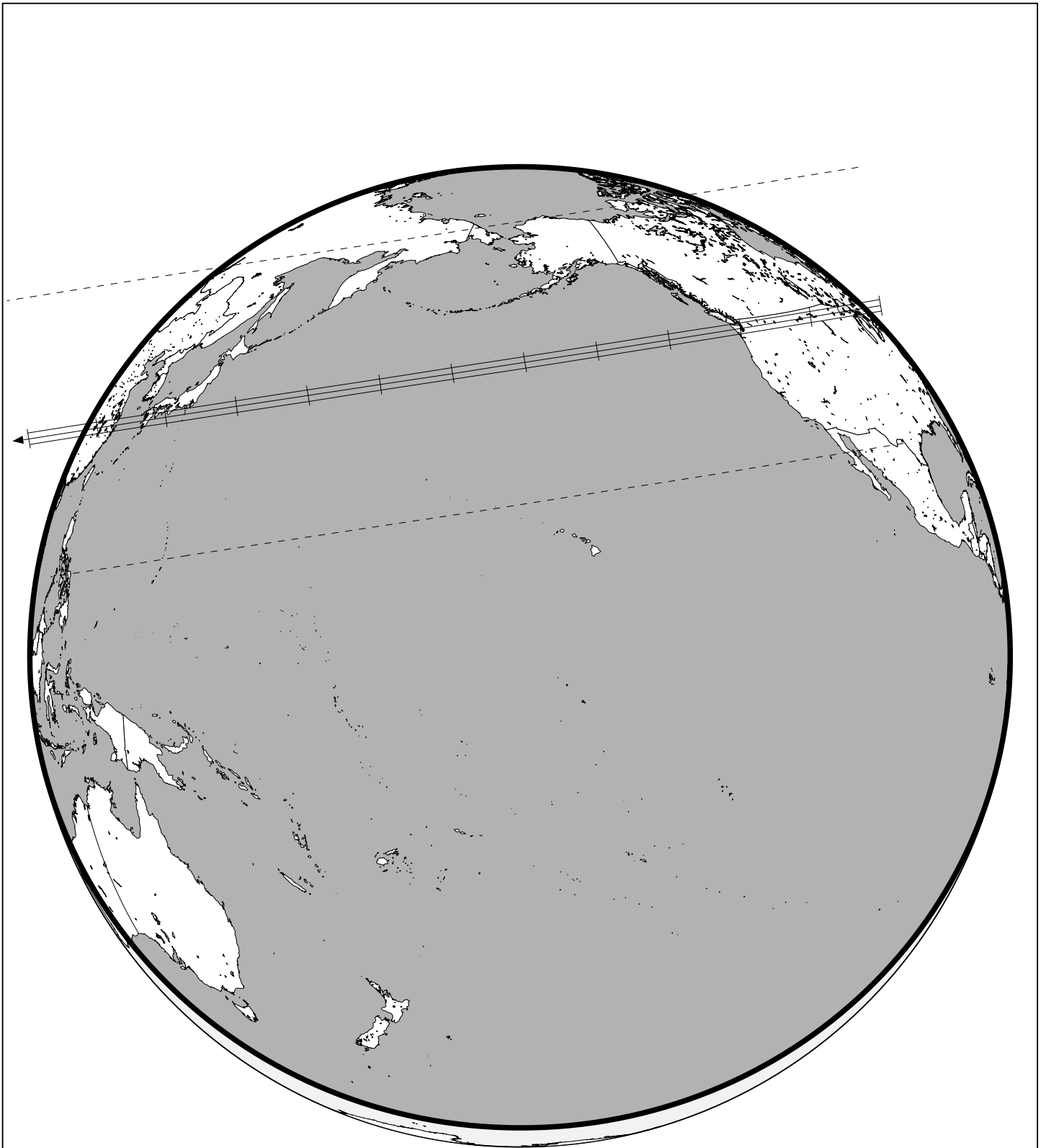
Sun : 164°

Moon : 108° , 35%



137 Meliboea & TYC 0112-01970-1

2025 dec 13 10^h52.7^m U.T.



10h47m00s – 10h59m00s; int. 1m