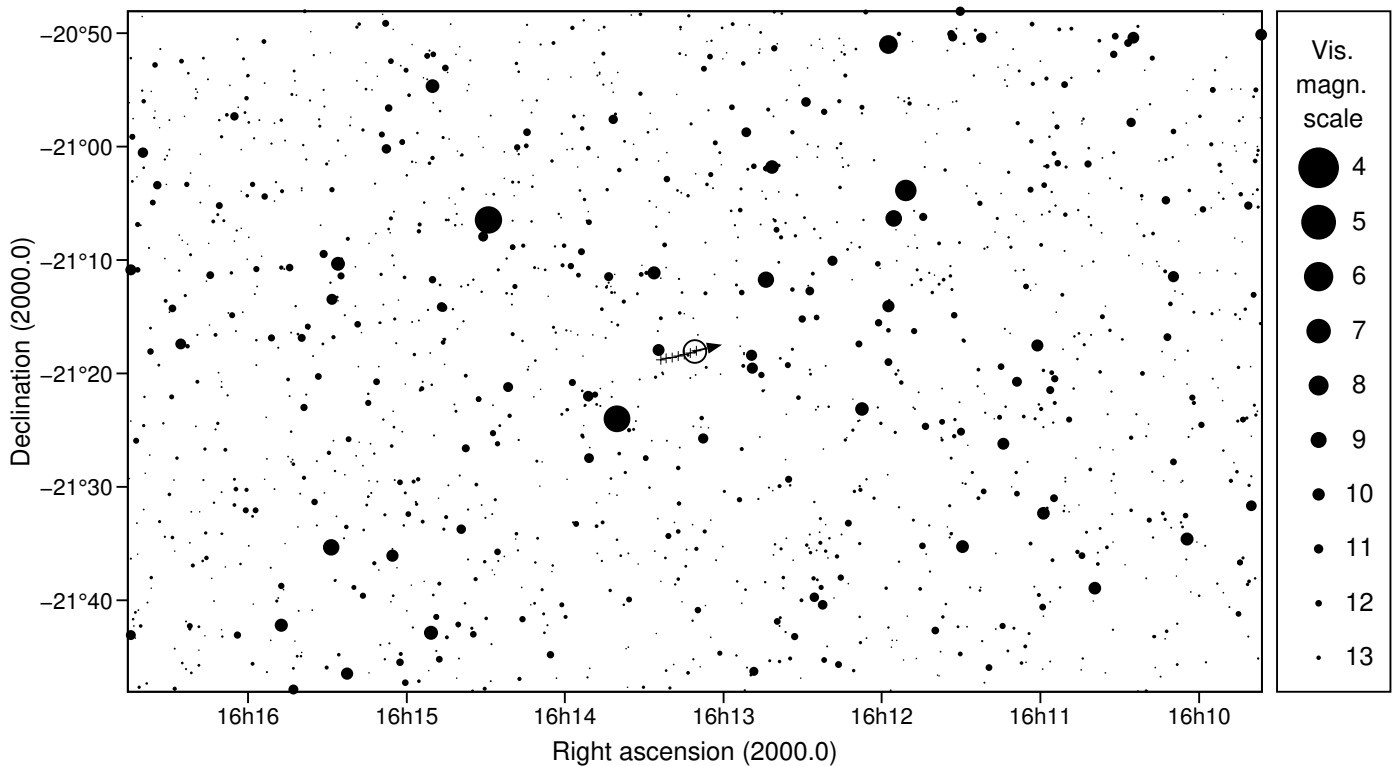
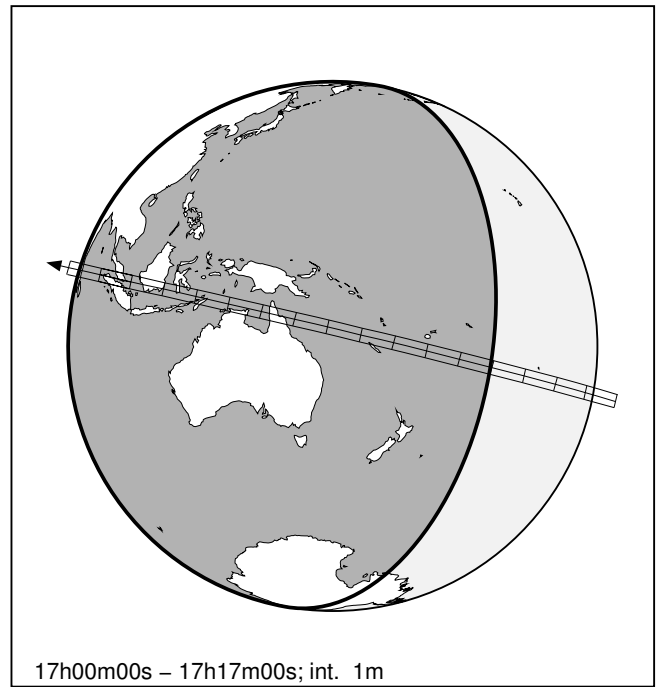
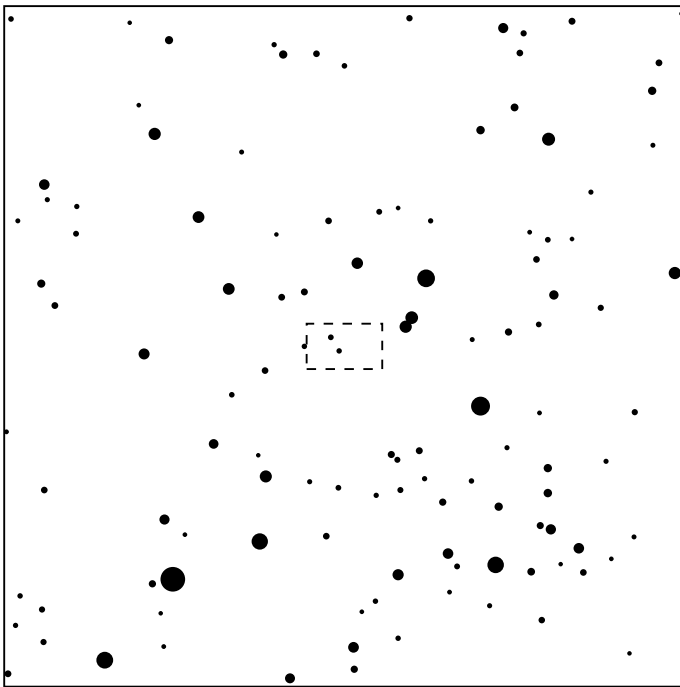


182934 2002GJ32 & UCAC4 344-079004

2024 apr 1 17^h 8.7^m U.T.

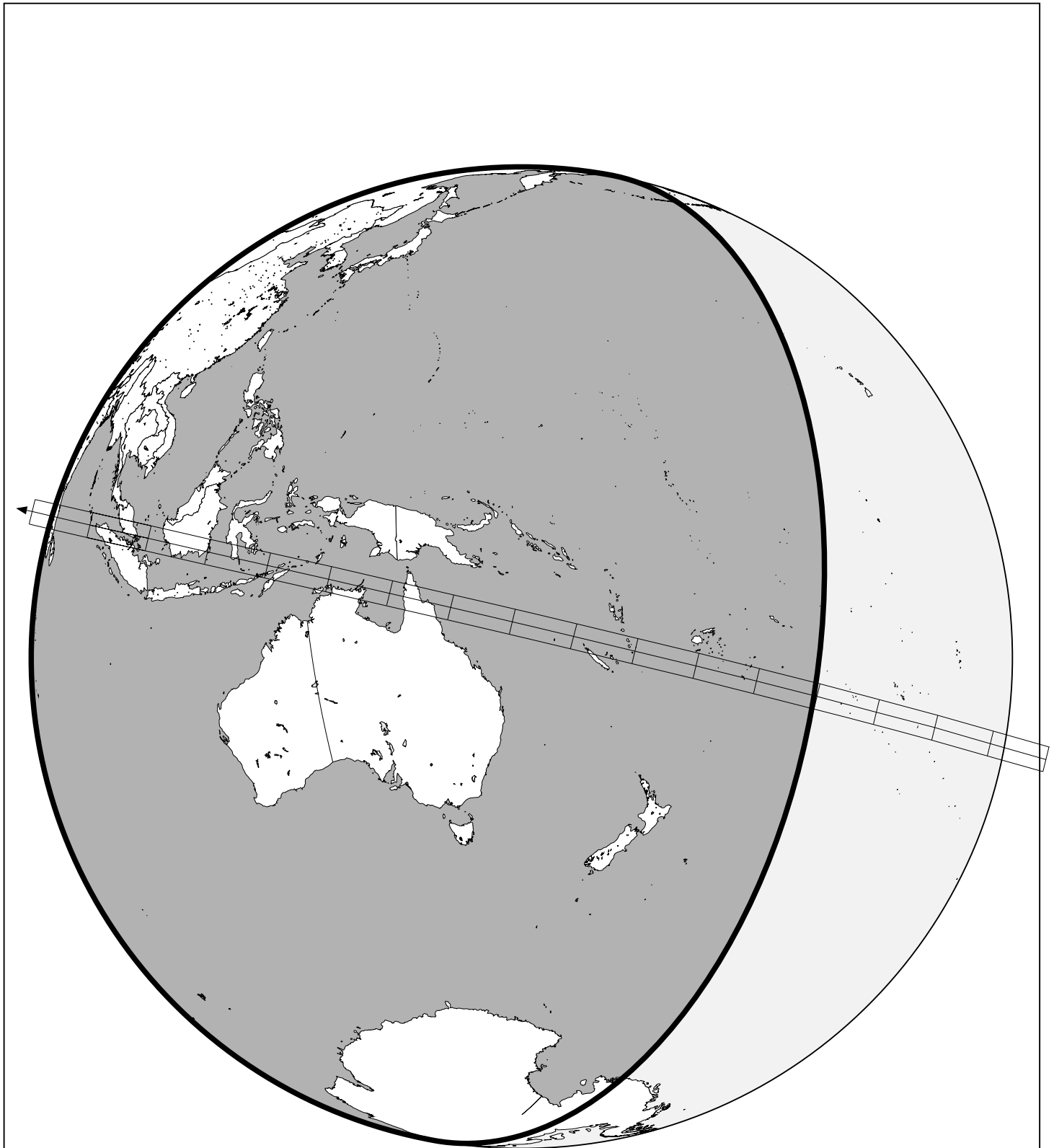
Planet: $a = 44.21$, $e = 0.11$
 V. mag. = 22.15 Diam. = 332.7 km = 0.01"
 $\mu = 1.48''/h$ $\pi = 0.20''$ Ref. = MPO694941
 $\Delta m = 8.7$ Max. dur. = 25.1s

Star: Source cat. EDR3
 $\alpha = 16^h 13^m 10.834^s$ $\delta = -21^\circ 18' 02.73''$
 Vmag = 13.50 Bmag = 13.88
 Sun : 126° Moon : 32° , 55%



182934 2002GJ32 & UCAC4 344-079004

2024 apr 1 17^h 8.7^m U.T.



17h00m00s – 17h17m00s; int. 1m