

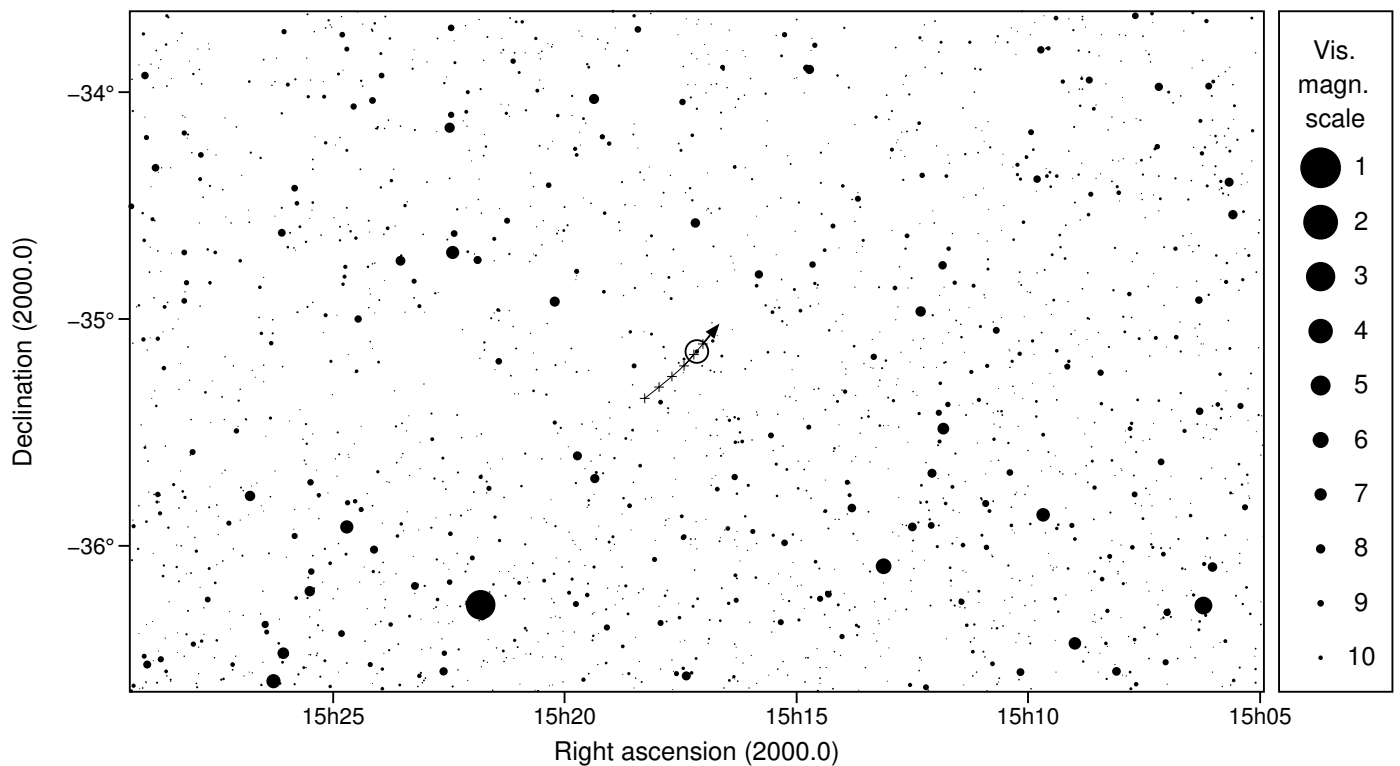
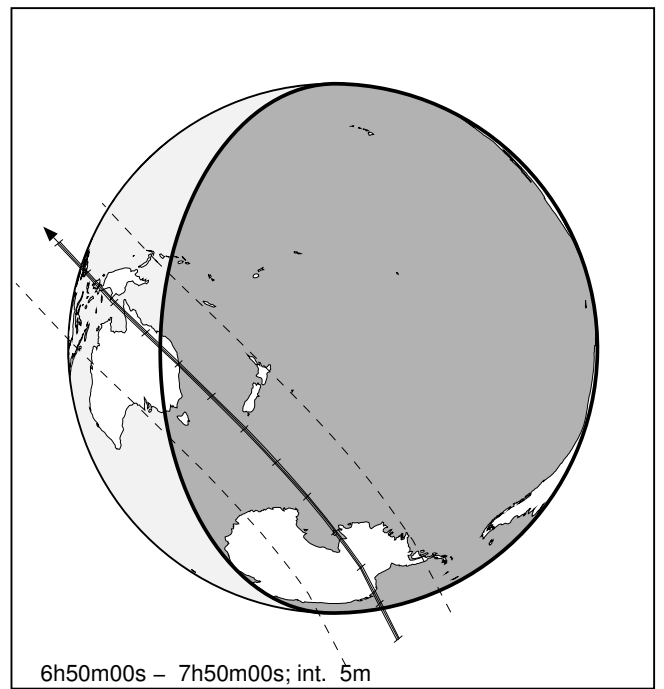
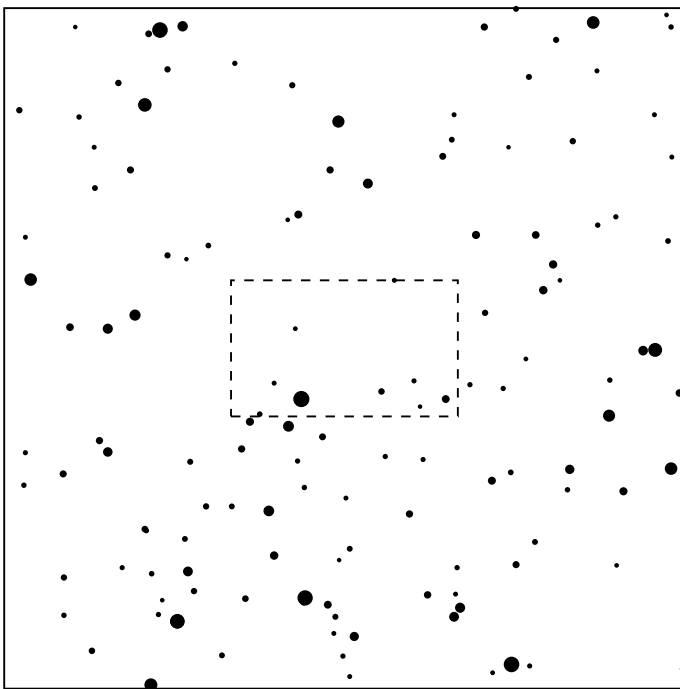
546 Herodias & TYC 7320-00782-1

2024 jul 5 7^h20.4^m U.T.

Planet: $a = 2.60, e = 0.11$
 V. mag. = 14.22 Diam. = 69.7 km = 0.05"
 $\mu = 9.19''/h$ $\pi = 4.50''$ Ref. = EG2022

Star: Source cat. EDR3
 $\alpha = 15^h 17^m 09.006^s$ $\delta = -35^\circ 08' 39.71''$
 Vmag = 10.05 Bmag = 11.42

$\Delta m = 4.2$ Max. dur. = 19.3s Sun : 130° Moon : 140°, 1%



546 Herodias & TYC 7320-00782-1

2024 jul 5 7^h20.4^m U.T.

