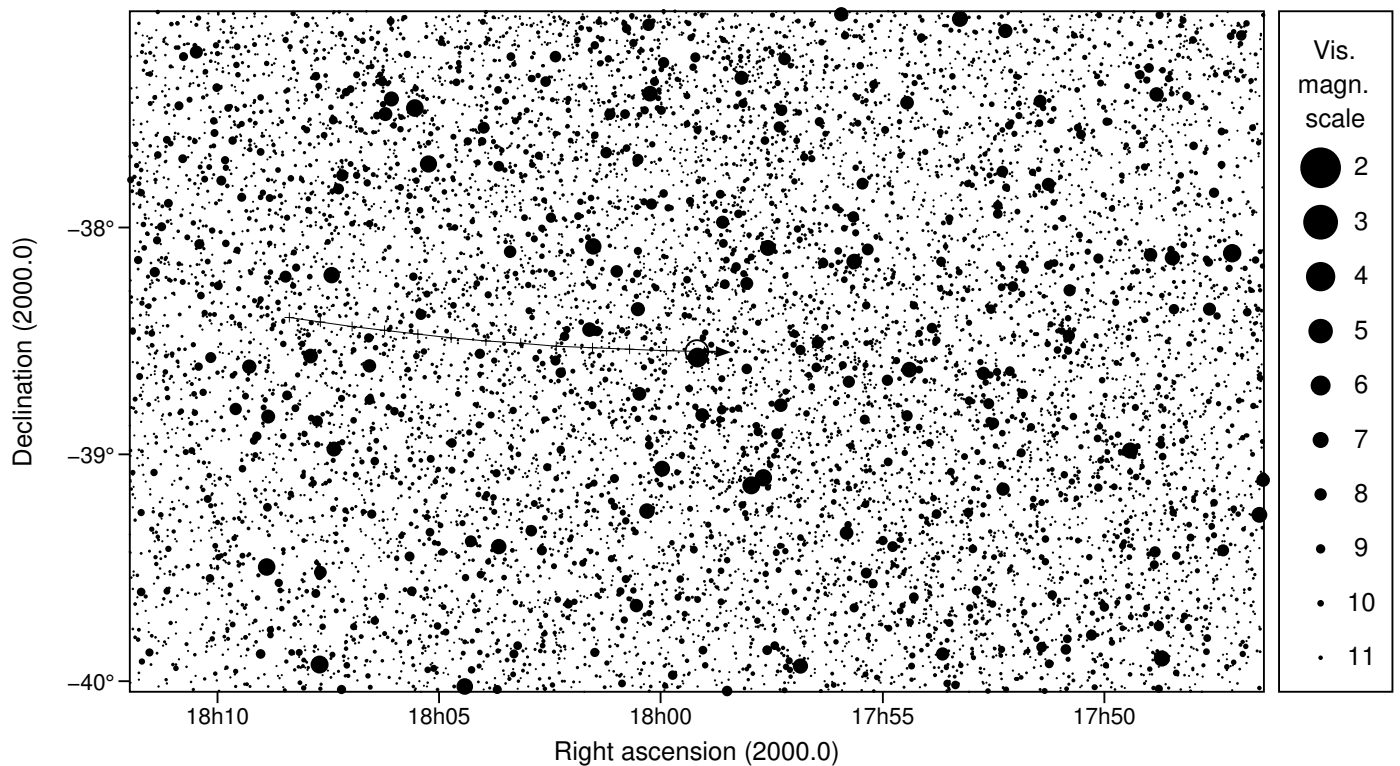
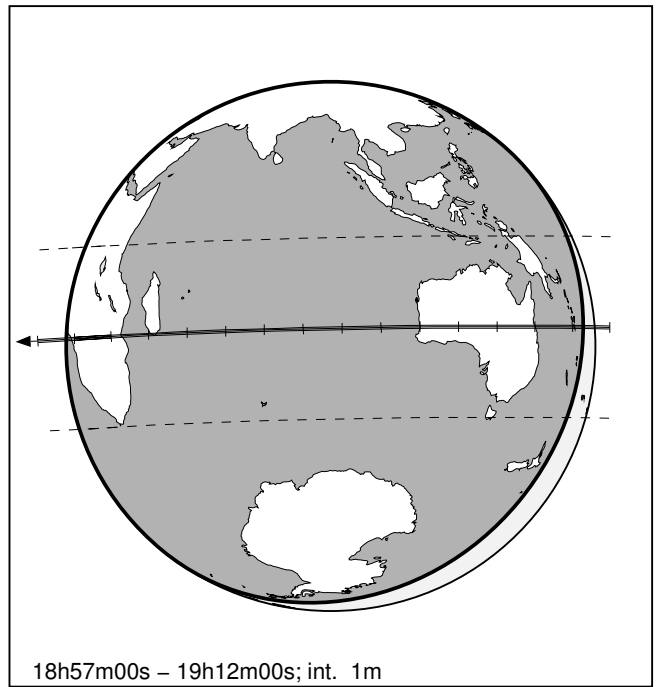
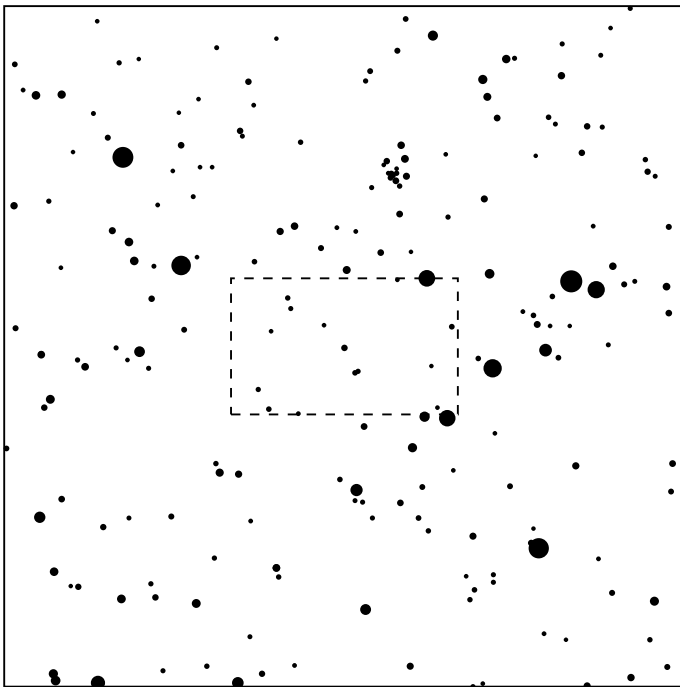


778 Theobalda & UCAC4 258-150442

2024 jun 2 19^h 4.3^m U.T.

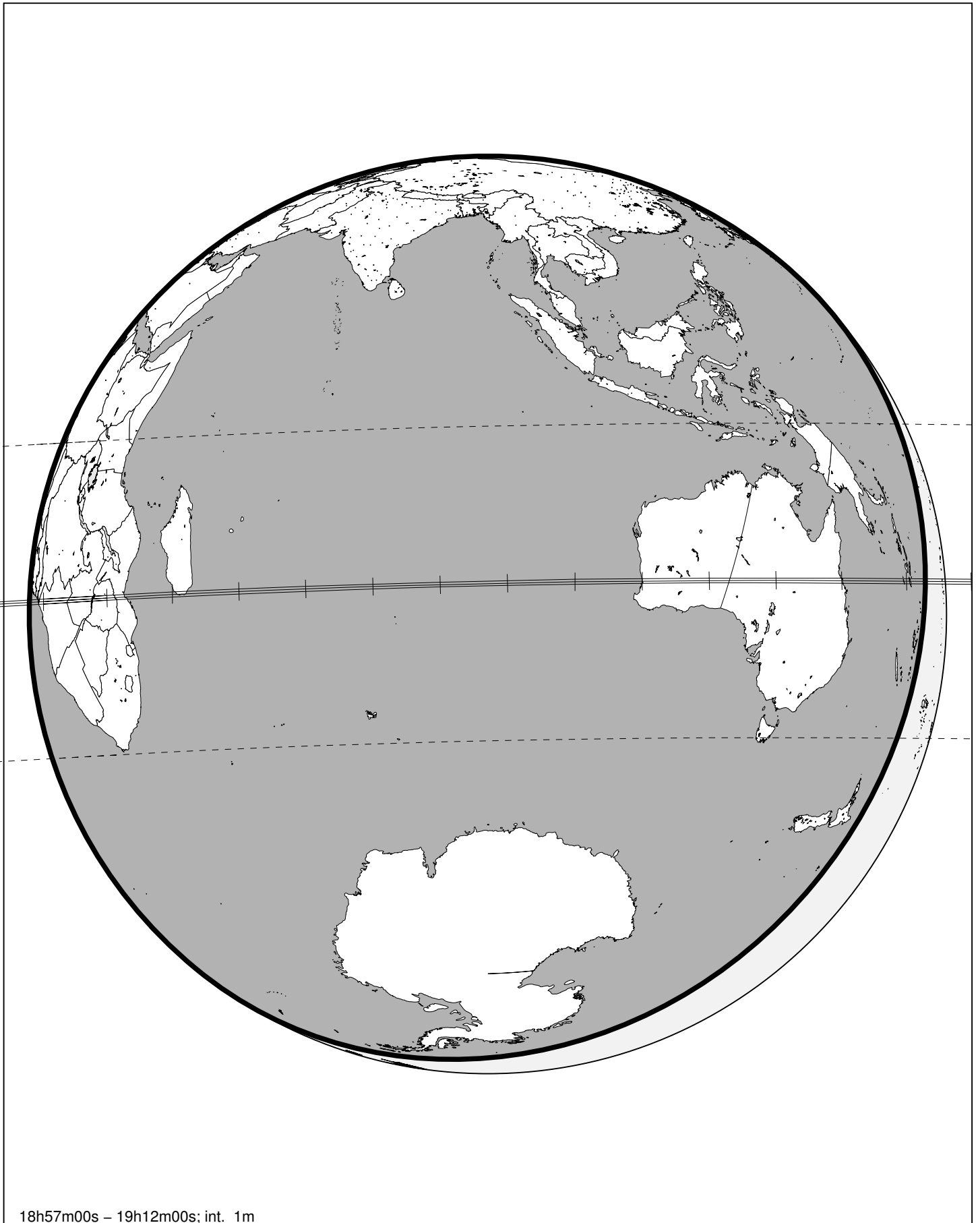
Planet: $a = 3.22, e = 0.24$
 V. mag. = 15.50 Diam. = 67.3 km = 0.03"
 $\mu = 25.13''/h$ $\pi = 2.92''$ Ref. = EG2022
 $\Delta m = 4.1$ Max. dur. = 4.4s

Star: Source cat. EDR3
 $\alpha = 17^h 59^m 11.358^s$ $\delta = -38^\circ 32' 43.70''$
 Vmag = 11.48 Bmag = 12.66
 Sun : 157° Moon : 113° , 17%



778 Theobalda & UCAC4 258-150442

2024 jun 2 19^h 4.3^m U.T.



18h57m00s – 19h12m00s; int. 1m