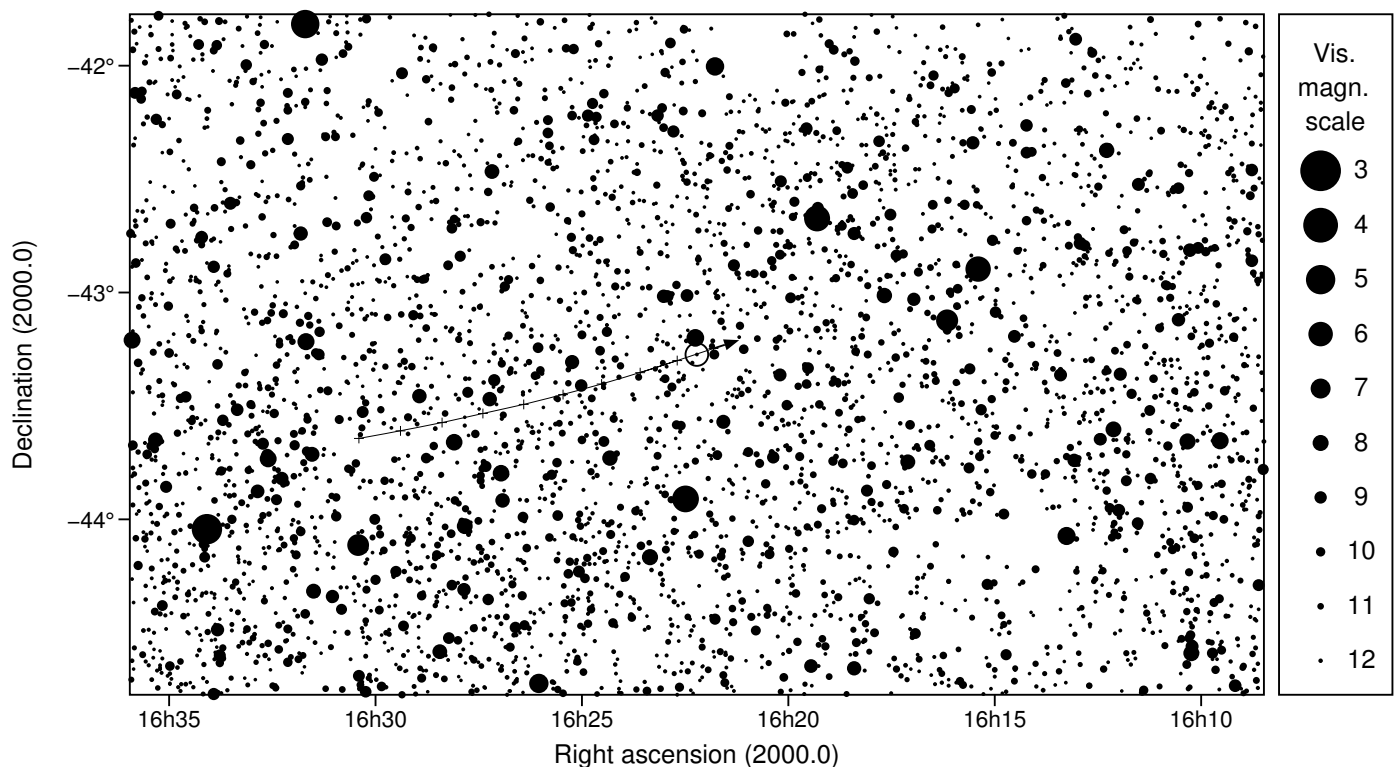
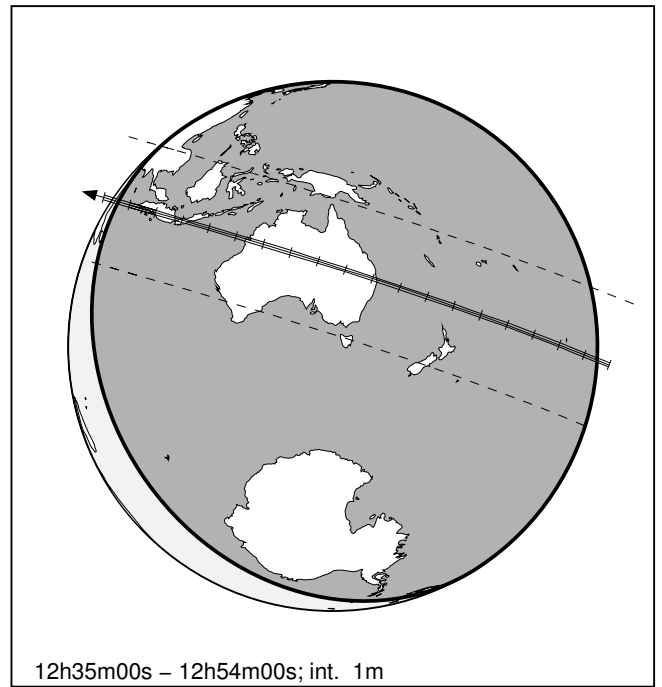
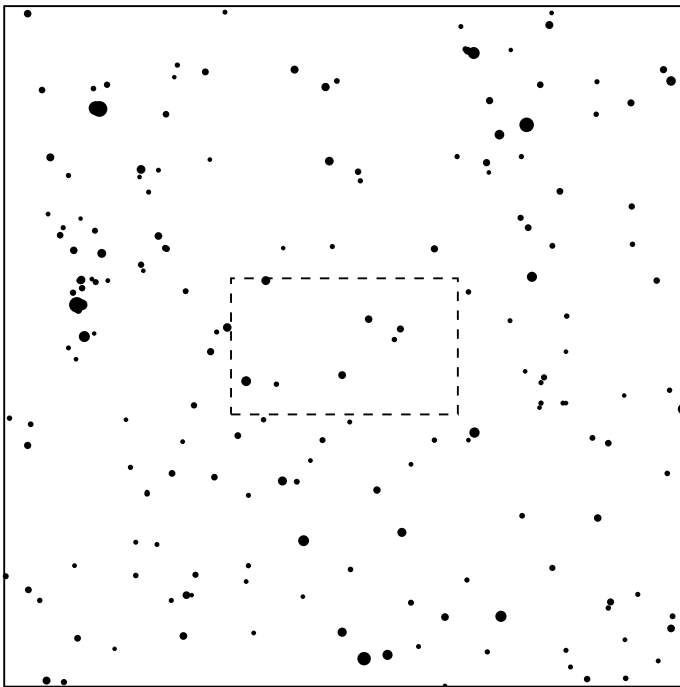


373 Melusina & UCAC4 234-104748

2024 jun 23 12^h44.6^m U.T.

Planet: $a = 3.11$, $e = 0.15$
 V. mag. = 13.89 Diam. = 99.6 km = 0.06"
 $\mu = 25.43''/h$ $\pi = 4.05''$ Ref. = EG2022
 $\Delta m = 1.7$ Max. dur. = 9.0s

Star: Source cat. EDR3
 $\alpha = 16^h22^m12.568^s$ $\delta = -43^\circ16'29.53''$
 Vmag = 12.41 Bmag = 12.84
 Sun : 150° Moon : 42° , 97%



373 Melusina & UCAC4 234-104748

2024 jun 23 12^h44.6^m U.T.

