

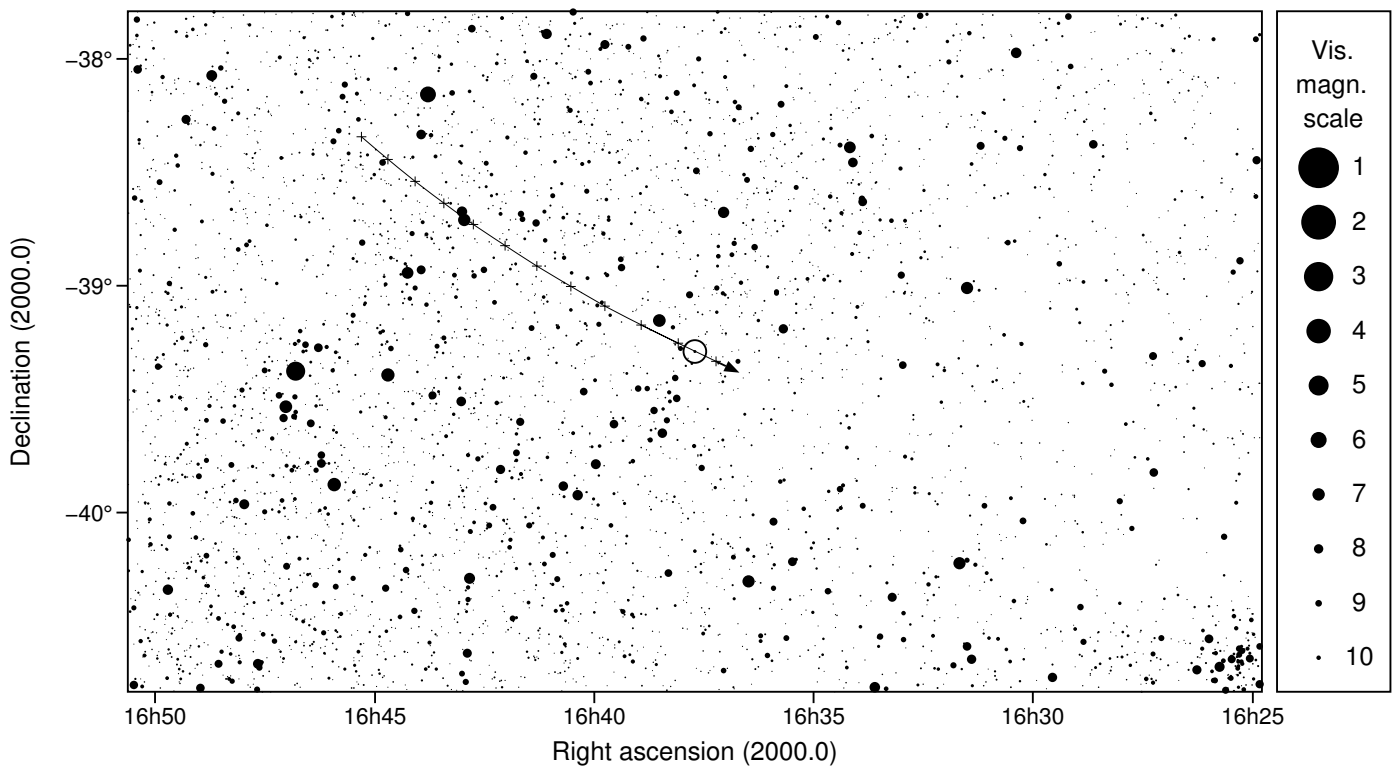
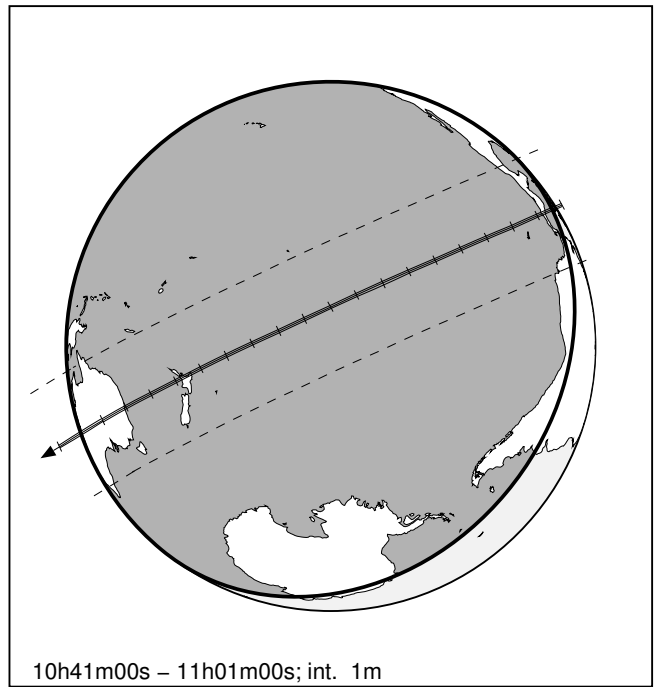
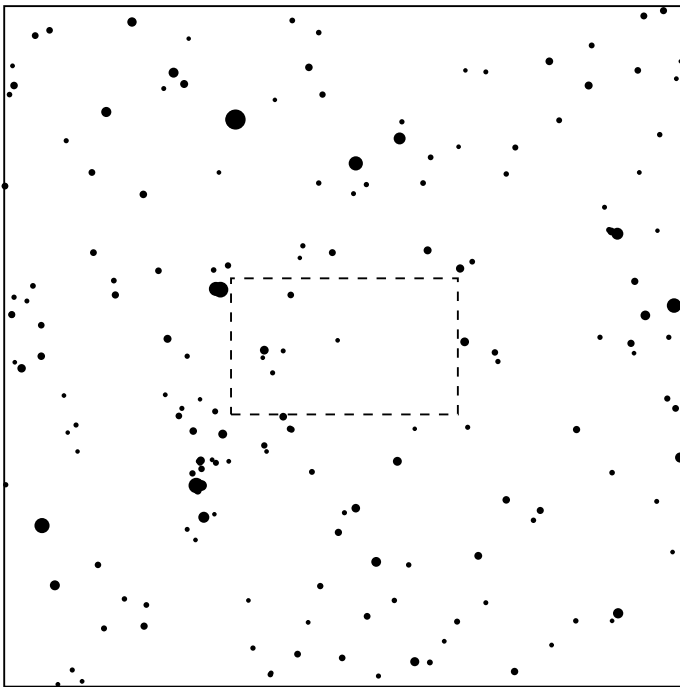
697 Galilea & UCAC4 254-091957

2024 may 8 10^h50.6^m U.T.

Planet: $a = 2.88, e = 0.15$
 V. mag. = 14.11 Diam. = 82.5 km = 0.06"
 $\mu = 27.76''/h$ $\pi = 4.40''$ Ref. = EG2022

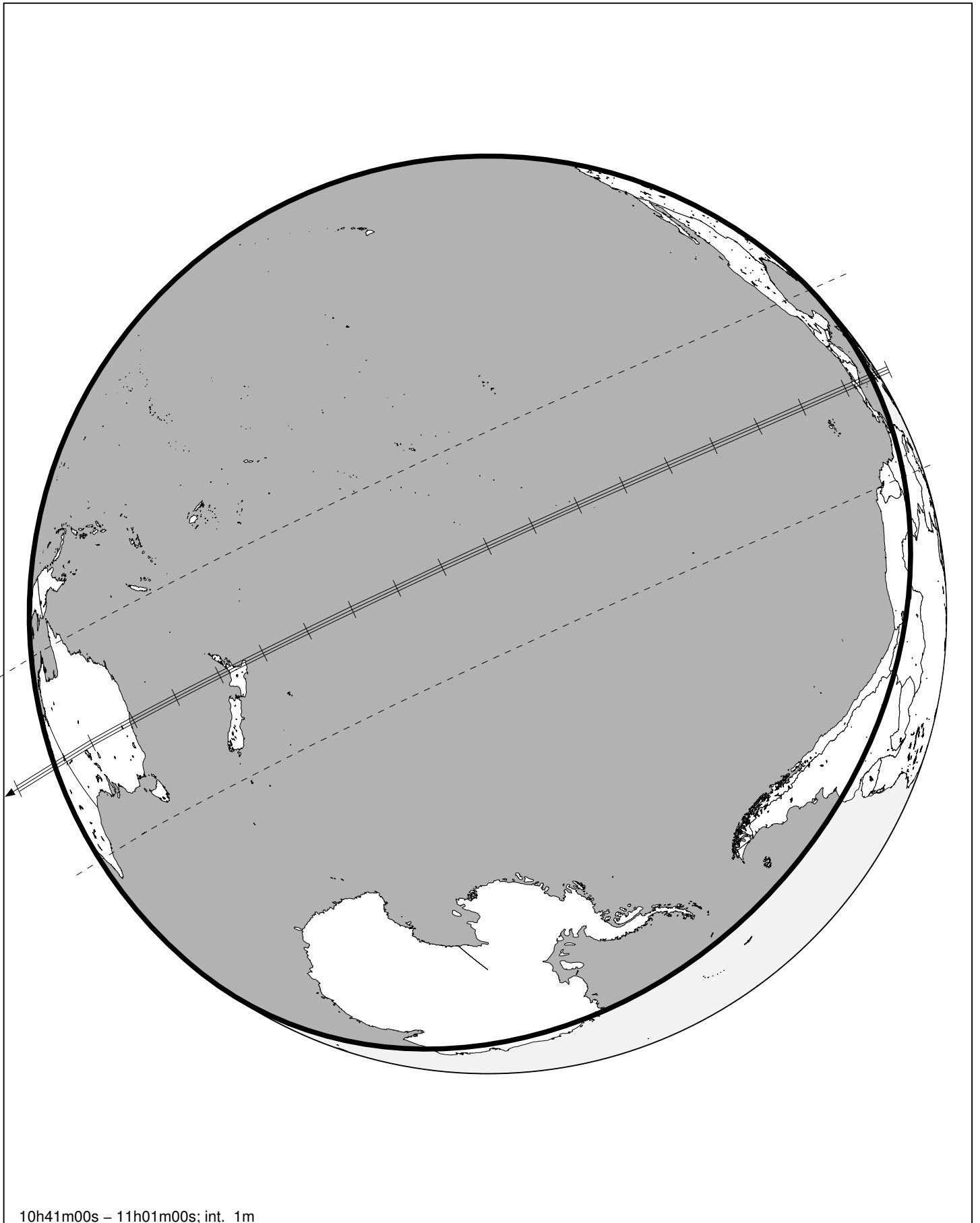
Star: Source cat. EDR3
 $\alpha = 16^h37^m42.439^s$ $\delta = -39^\circ17'26.31''$
 Vmag = 10.89 Bmag = 12.37

$\Delta m = 3.3$ Max. dur. = 7.4s Sun : 149° Moon : 155°, 0%



697 Galilea & UCAC4 254-091957

2024 may 8 10^h50.6^m U.T.



10h41m00s – 11h01m00s; int. 1m