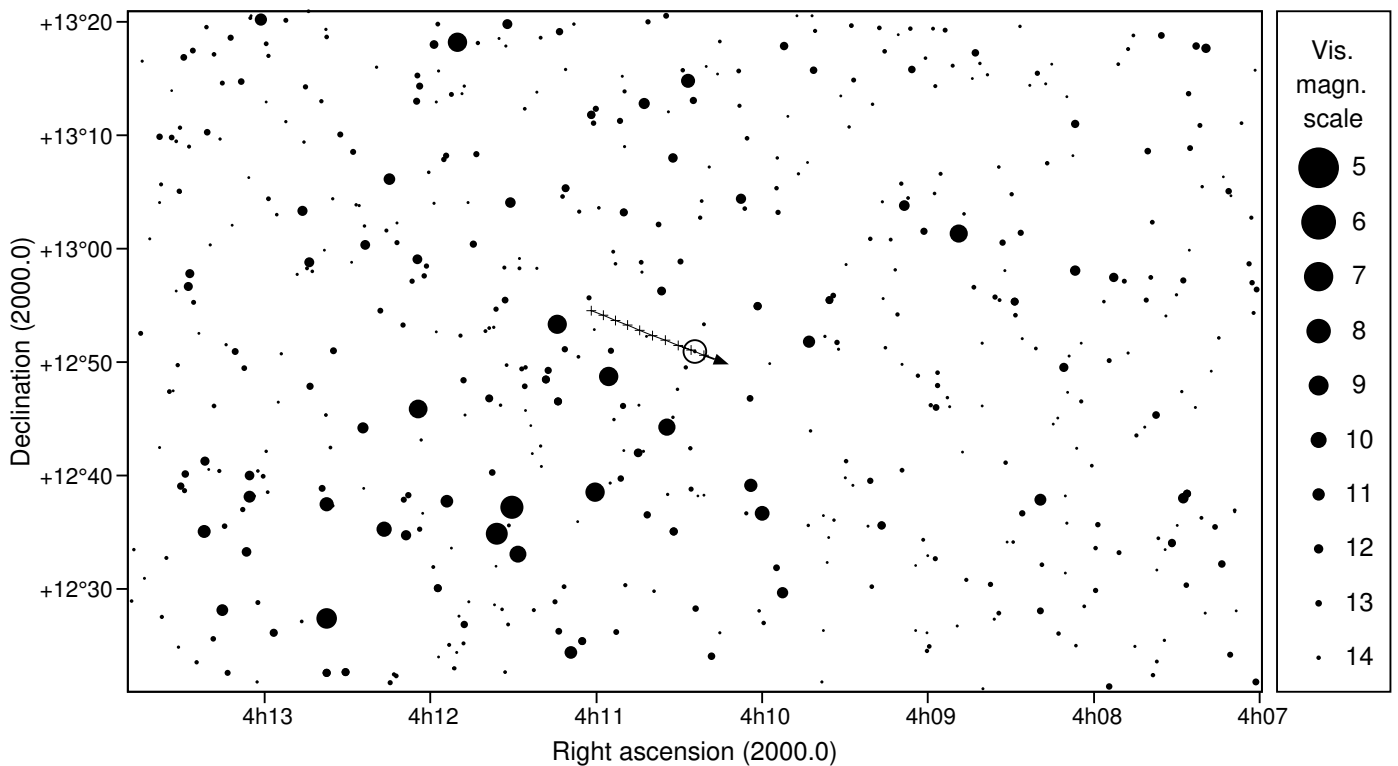
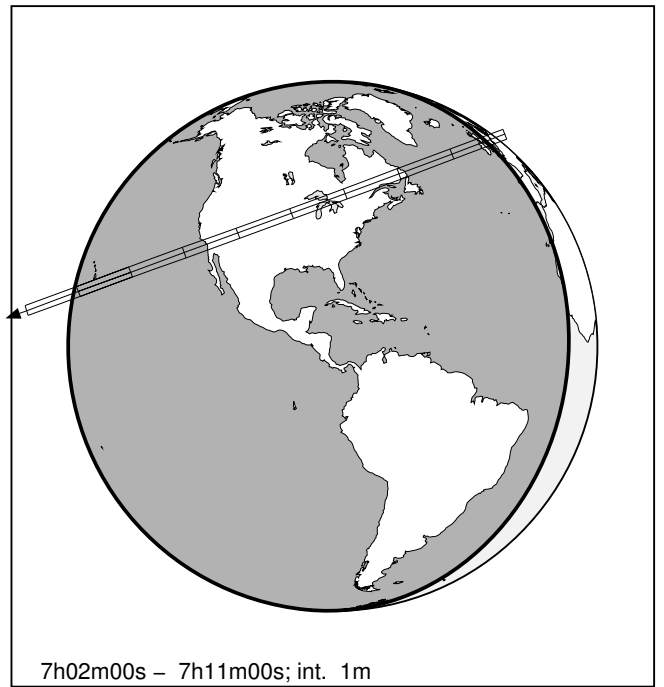
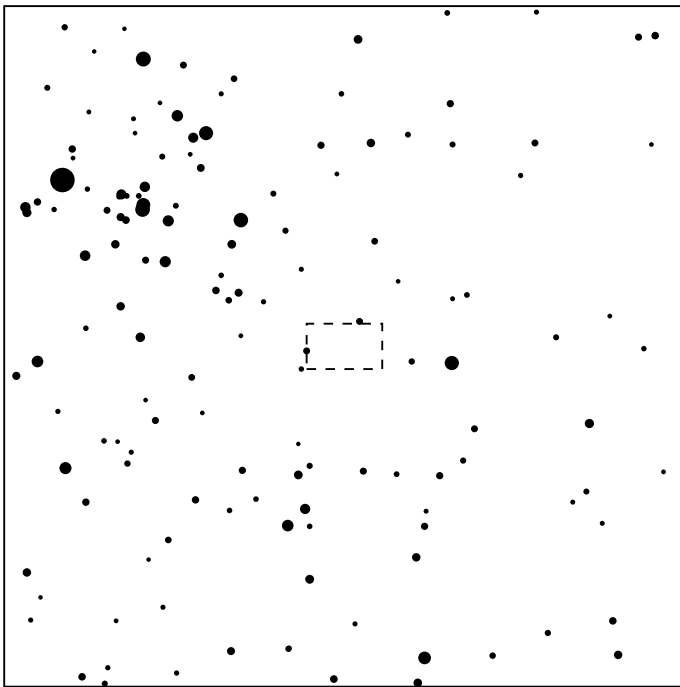


523647 2010VV224 & UCAC4 515-007000

2023 oct 31 7^h 6.1^m U.T.

Planet: a = 44.15, e = 0.16
 V. mag. = 21.86 Diam. = 255.9 km = 0.01"
 μ = 3.09"/h π = 0.24" Ref. = MPO649396
 Δm = 7.4 Max. dur. = 11.3s

Star: Source cat. EDR3
 α = 4^h10^m24.343^s δ = +12°50'55.58"
 Vmag = 14.46 Bmag = 15.11
 Sun : 153° Moon : 13° , 93%



523647 2010VV224 & UCAC4 515-007000

2023 oct 31 7^h 6.1^m U.T.



7h02m00s - 7h11m00s; int. 1m