

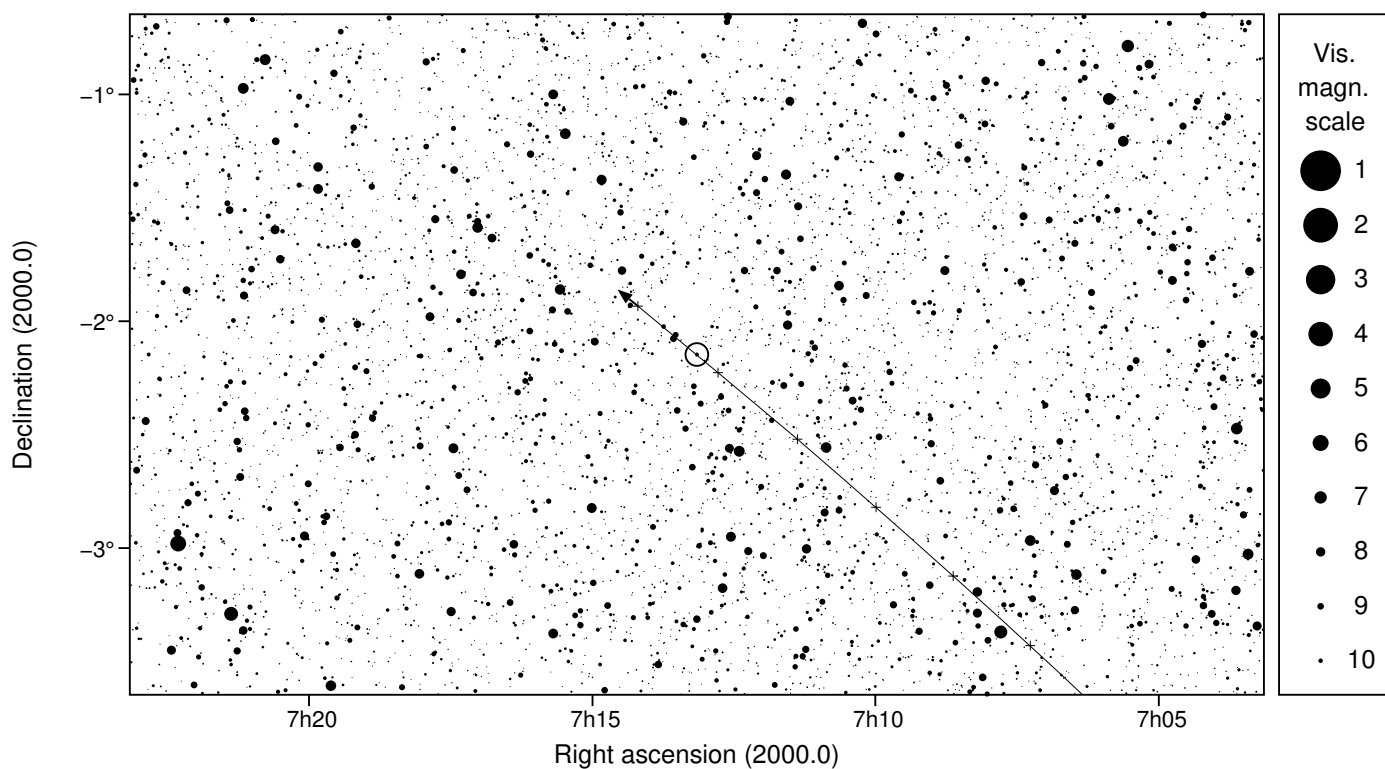
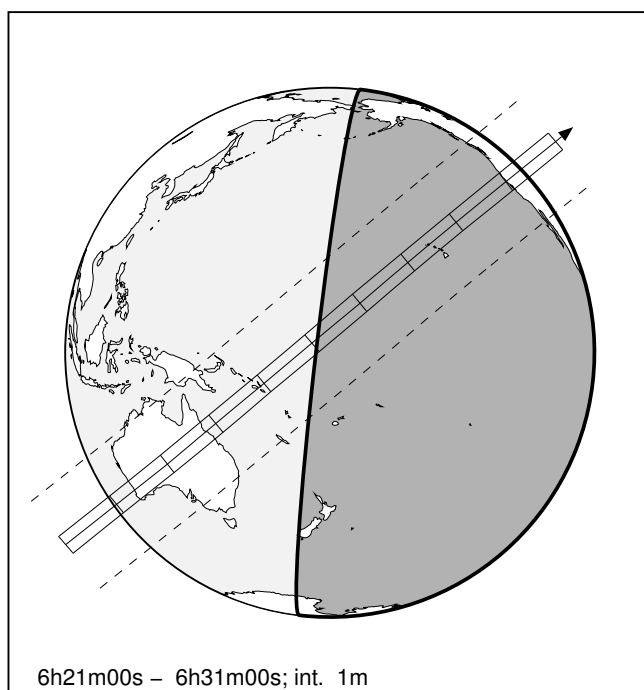
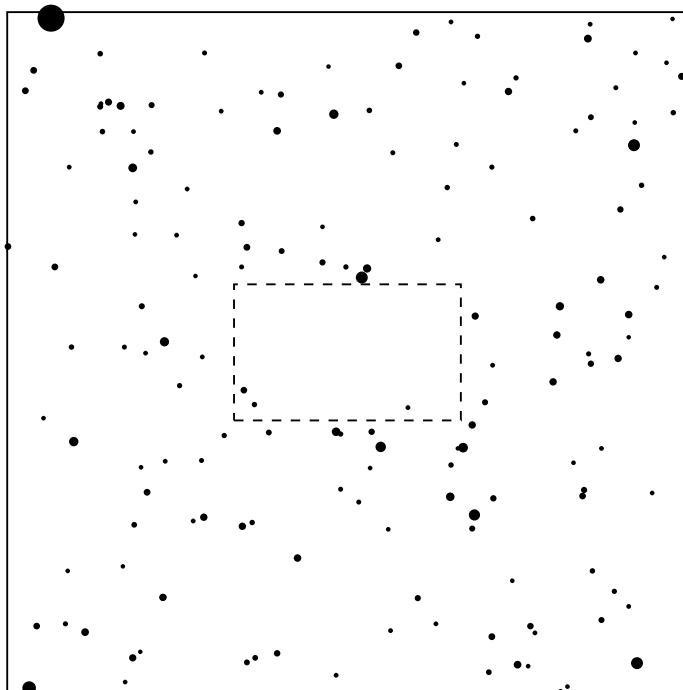
2 Pallas & TYC 4819-02418-1

2023 apr 7 6^h26.1^m U.T.

Planet: $a = 2.77, e = 0.23$
 V. mag. = 8.41 Diam. = 530.9 km = 0.40"
 $\mu = 68.73''/h$ $\pi = 4.78''$ Ref. = EG2021

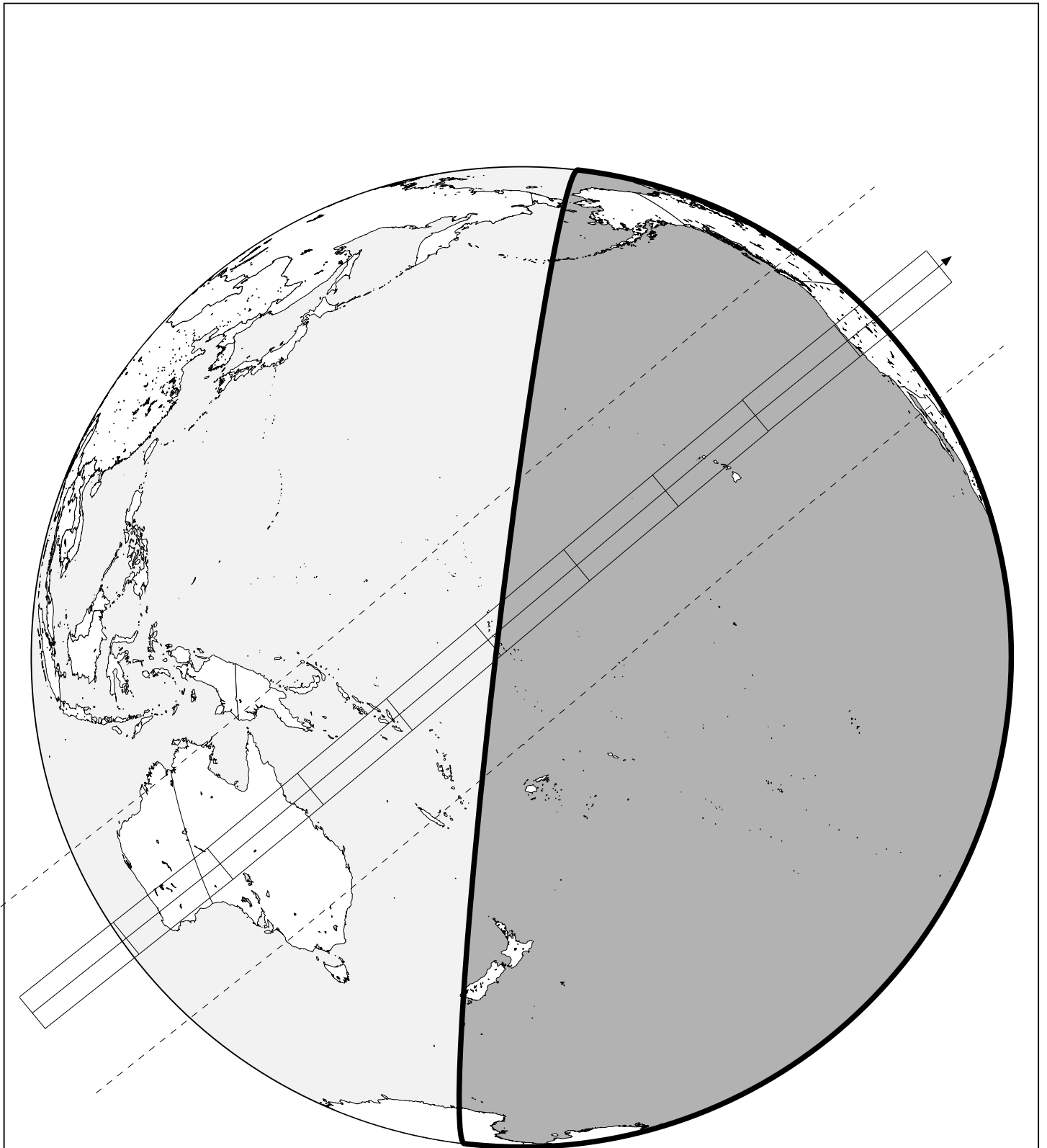
Star: Source cat. EDR3
 $\alpha = 7^h13^m09.173^s$ $\delta = -2^\circ08'48.25''$
 Vmag = 10.27 Bmag = 11.29

$\Delta m = 0.2$ Max. dur. = 20.8s Sun : 92° Moon : 99° , 99%



2 Pallas & TYC 4819-02418-1

2023 apr 7 6^h26.1^m U.T.



6h21m00s – 6h31m00s; int. 1m