

965 Angelica & TYC 7383-00377-1

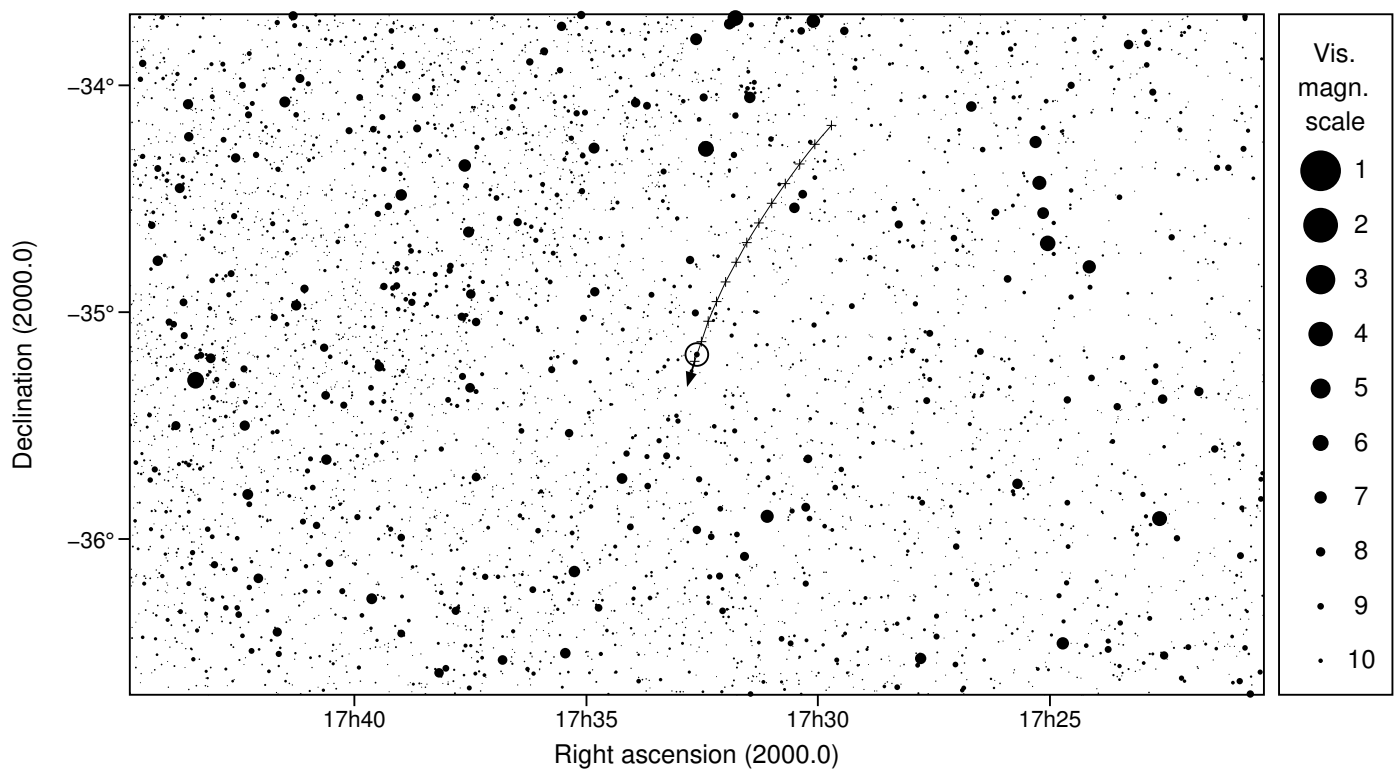
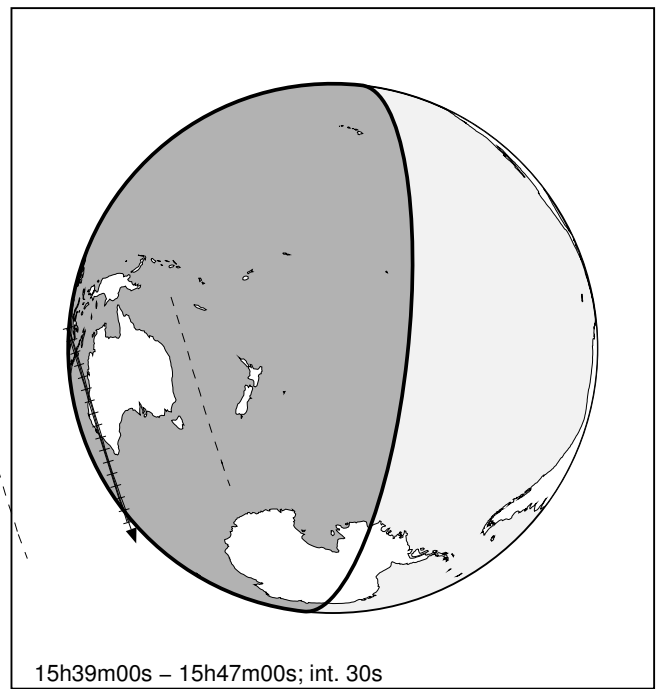
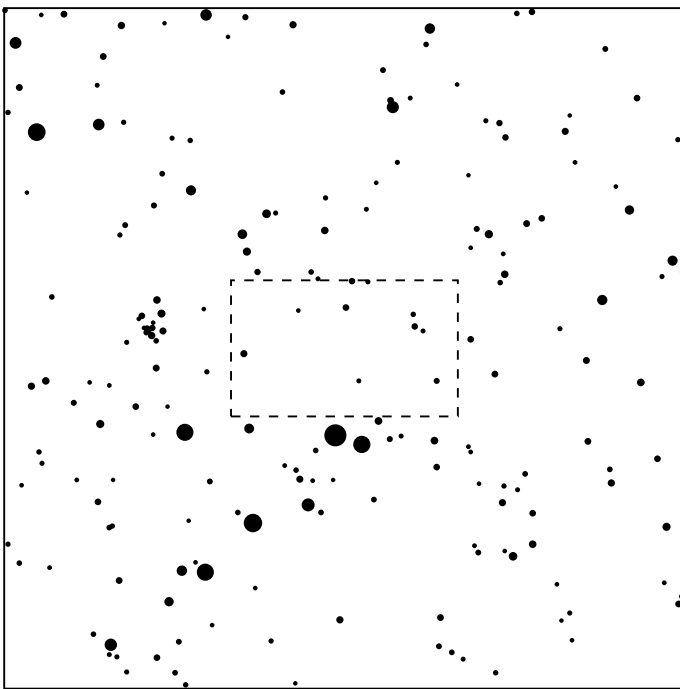
2020 mar 31 15^h42.9^m U.T.

Planet: $a = 3.14, e = 0.29$
 V. mag. = 16.37 Diam. = 54.5 km = 0.02"
 $\mu = 13.81''/h$ $\pi = 2.46''$ Ref. = EG2018

Star: Source cat. GDR2a
 $\alpha = 17^h 32^m 36.849^s$ $\delta = -35^\circ 11' 08.42''$
 Vmag = 9.42 Bmag = 9.74

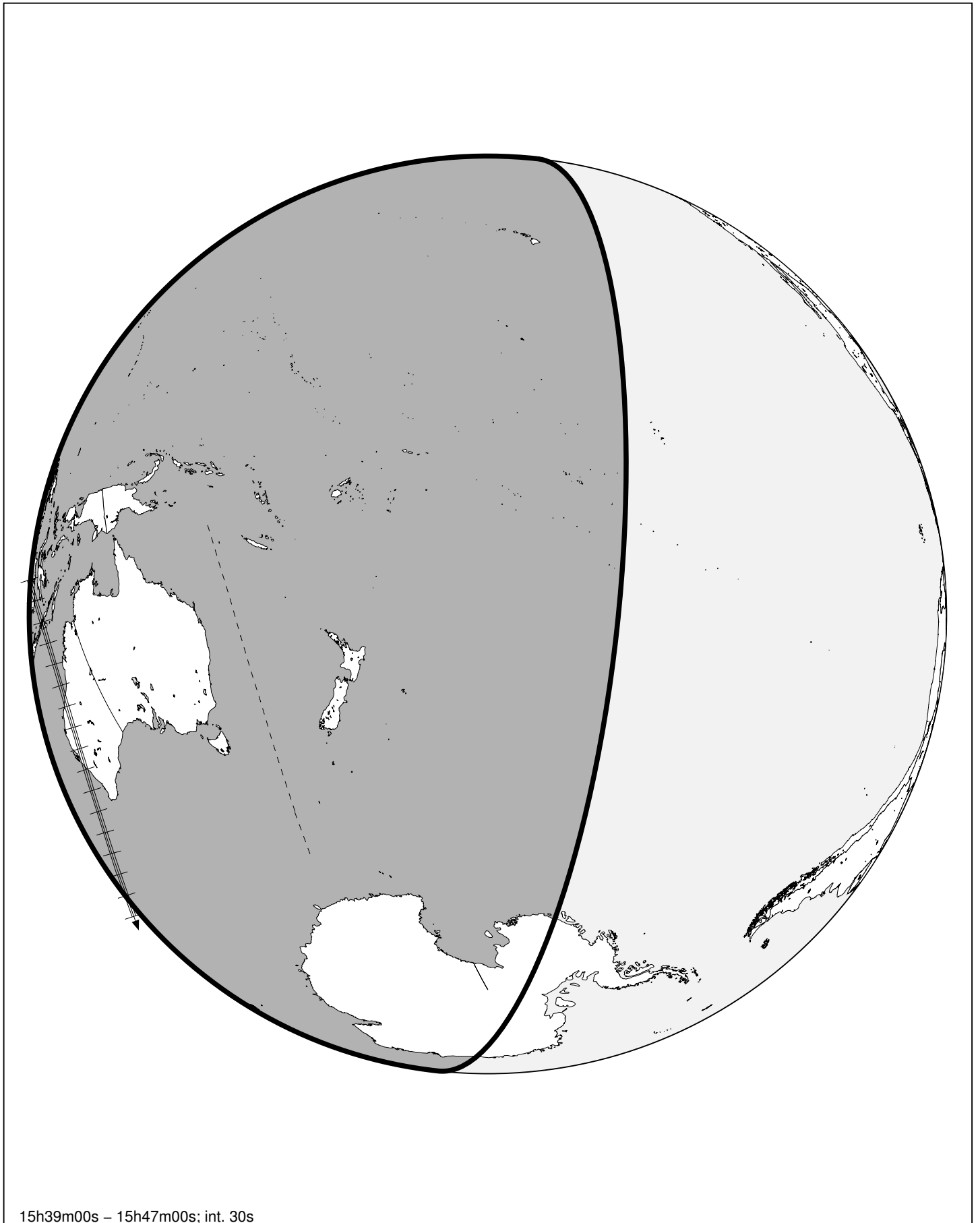
$\Delta m = 6.9$ Max. dur. = 5.5s

Sun : 106° Moon : 166° , 42%



965 Angelica & TYC 7383-00377-1

2020 mar 31 15^h42.9^m U.T.



15h39m00s – 15h47m00s; int. 30s